

Waterfront Safety Committee

Meeting Date: December 9, 2020, 5:00 p.m. via Zoom

Meeting

Recap Date: December 12, 2020

Attendees:

Committee: Craig Brigham, Jim Coughlin, Gordon Fuller, Bill Haverty, Mike Lannan,
Bill Paige, Jeffrey Wilt

Community

Members: Dan Webster

The committee convened to discuss 2 agenda items: Update of Waterfront Regulations and Update on seawall project as it pertains to storage and access of small watercraft.

Update Waterfront Regulations

Craig Brigham updated the group on efforts by the Wharf Masters and Gordon Fuller to update the waterfront regulations ratified by the Overseers in March 2019. The genesis of this effort is the soon to be launched NVC website, which will have a waterfront safety page.

Update is a multi-step process beginning with the re-organization and formatting of the regulations to more closely resemble the outline form utilized in establishing ordinances. This is very much still a work in process. There was agreement that certain inclusions in the draft document that are specific to an ordinance should be excluded for the purpose of the current exercise. Craig will discuss this further with Judy Metcalf, chair of the Governance Committee.

The second step is an update of the regulations to reflect four key changes:

1. Storage of boats and trailers – Storage of boats and trailers is prohibited in all public parking areas at the waterfront except as noted in the Parking Ordinance. At the Wharf Master's discretion, short-term parking of boats and trailers may be allowed (this should be reviewed to ensure consistency with Parking Ordinance).
2. Size Limits – Dinghies tied to the boat float overnight may not exceed 10' in length and 5.5' in width. Dinghies tied overnight may not have an outboard motor greater than 9.9 hp. (This is a change from the current regulations, which set a not-to-exceed length of 12'.)
3. Permits – Permits are required for all vessels stored at the floats and at the waterfront. Permits are available at the Village Office. 207-338-0715
4. Cradle Park –
 - Boat and trailer storage only at the discretion of the Wharf Master.
 - Winter: May be used for storage of small boats September through June.
 - Summer: No summer storage of boats is allowed.
 - Storage is at the owner's risk. NVC assumes no responsibility for damage, loss, etc. of anything stored in this area.
 - Owner's name and phone number must be clearly visible on the boat and trailer. (compare to parking ordinance)

- Parking: The Parking Ordinance permits parking of vehicles “As marked and signed.” Owners name and number must be plainly visible through the windshield. All vehicles must have current registrations.
- Long-Term: No long-term parking of vehicles is allowed.
- Short-Term: Up to one week short term parking in the designated areas is allowed from July 1st through Labor Day.

Updating Regulations –

The committee recommends updating regulations with proposed changes as a formal ordinance to be introduced in early 2021.

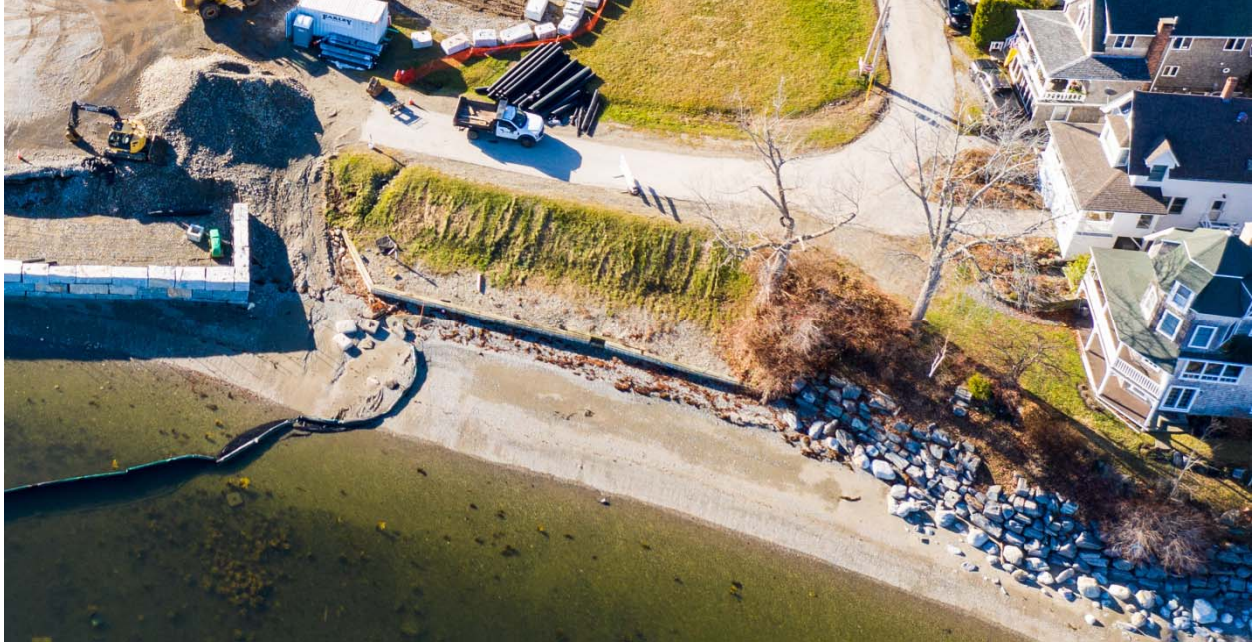
Posting of Waterfront Regulations –

At the launch of the new NVC website, the committee recommends posting the regulations ratified by the Overseers in March 2019 in the revised format.

Seawall Update

Mike Lannan updated the committee on progress related to the seawall project. The discussion focused on the new north seawall (that is, where the kayaks are currently stored) and the possible need to provide access from the beach to the small watercraft storage area, which will be at a higher elevation once the new granite wall is in place. A photo of the area is included below. There is currently a cut-in stair now which provides access to the kayak storage from the beach. Mike mentioned that both the contractor and engineer recommended that we not cut stairs into the new wall because of the type and design of the granite blocks and compacted fill material behind being the “true” wall. Any stairs should be either in front of and/or on top of wall for long-term structural integrity. The existing top elevation will be raise slightly to match the other wall, but this will not result in a huge change in wall height because the base elevation is so much higher at the north wall. After the boat ramp corner, the north wall will actually be one block more shallow as a result to meet the same required scour depth, simply because of its added base elevation.

The committee reviewed several options for access from the beach at the north seawall. Options include granite steps, wood steps, or no steps. The committee took an informal vote (3-3 tie) on whether steps were a necessary addition. Those voting in favor believe steps in the middle of the north wall are essential for small craft access. Others believe the boat ramp serves that same purpose. It was noted that steps, while likely to me more efficiently incorporated at this stage of the project, would also entail ongoing maintenance costs, including periodic replacement. There was “consensus” that stairs are something that could be added later, so we would wait to see how the boat ramp only option works.



Other business

The committee discussed lighting issues associated with the wharf and new seawall. The committee recommends that any light replacement should not decrease lighting for safety and security at the dinghy dock. The committee is in favor of replacing the flood light at the end of the dock with directed lighting, as the flood-light on the end of the dock is currently blinding for approaching boats after dark.