

Parks & Trees Committee to Meet on 5/6

May 1, 2023 [NVC Updates](#)

The Parks and Trees Committee will meet via Zoom on Saturday, May 6th at 9AM. The public is invited to attend.

Meeting agenda items include a proposal for a donated garden in upper Bayview Park; and some residents desire to place picnic tables and chairs in Merrithew Park.

To join the meeting via Zoom:

<https://us02web.zoom.us/j/89640938642?pwd=N0VjemVPQVpuMmhXcUFaeHILVUdwZz09>

Meeting ID: 896 4093 8642

Passcode: 748303

One tap mobile

+16469313860,,89640938642#,,,*748303# US

Upper Bayview Park - garden proposal

I am writing with an offer to install a garden on the lower part of Upper Bayview Park for the enjoyment of the Bayside community.

This is a very lightly used, highly visible park, ripe for beautification. The work recently done in Merithew Park, with the positive visual improvements, served as a model for what might be possible. To that end I decided to make this offer.

The garden was designed by Jason White, a landscape architect at Plants Unlimited in Rockport. It features native cultivars that are deer resistant, attract birds and butterflies, with variety that will provide color from Spring to Fall. The installation will be at my expense; I will also commit to pay for maintenance expenses for at least 10 years (perhaps longer but my crystal ball is a bit fuzzy that far out). The garden will be located just above the ditch on George Street (approx. 10') and will also have a 10' space on either side (from the woods and from Rogers Lane).

I have spoken to owners who might be impacted by this installation as well as the families I have seen using the park. Their responses were positive, which encouraged me to make this offer for your consideration. Of particular note; none of the plantings will grow to a height that will impact views from the Webster or Crowe cottages.

My only request is that I be allowed to install a small, ground level plaque – “This garden is gift for the enjoyment of the Bayside Community from the Kazilionis family”.

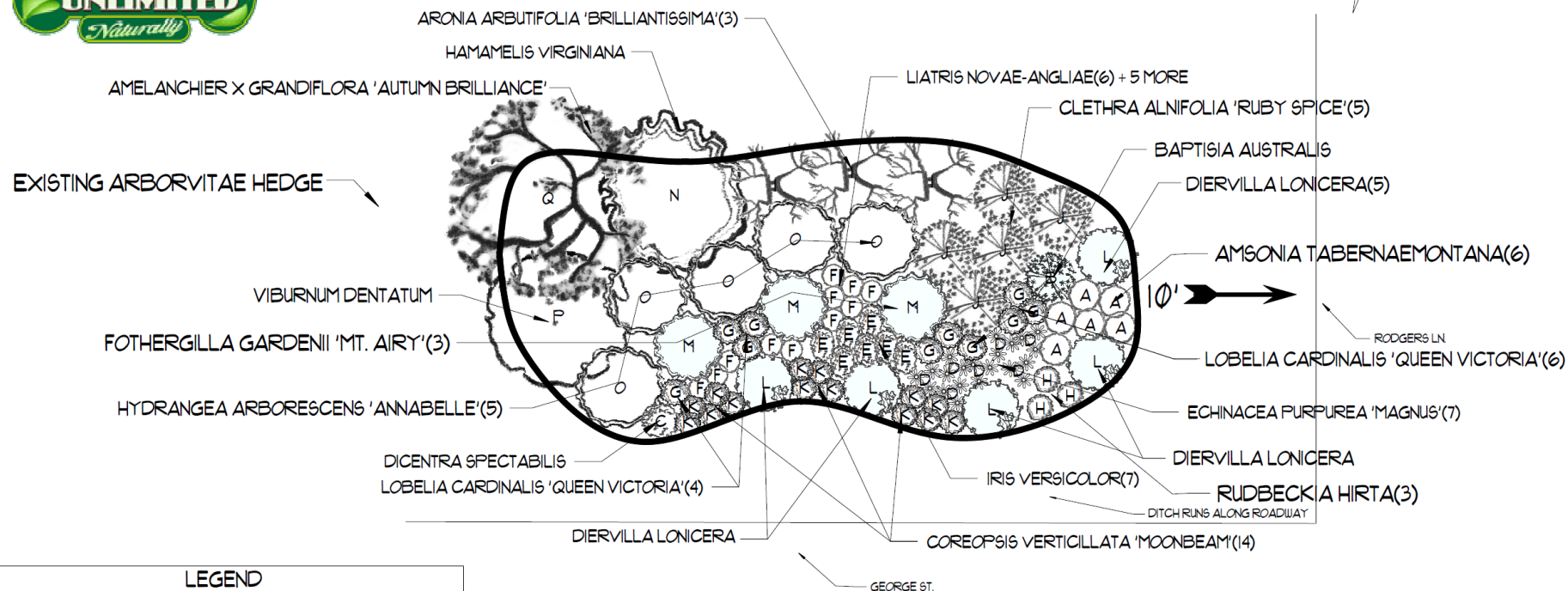
I have attached the garden design and the list of plants for your information. I plan to retain LG Whitcomb Landscaping to do the installation as they have done work for the Village and have the requisite insurance coverage.

Looking forward to your response, happy to answer any questions you may have.

Steve Kazilionis



GRADE DROPS ABOUT 2' TOWARD GEORGE ST.



LEGEND

BOTANICAL NAME	COMMON NAME	QTY
FLOWER PERENNIAL		
A (6) AMSONIA TABERNAEMONTANA	BLUESTAR	6
B (1) BAPTISIA AUSTRALIS	INDIGO BLUE FALSE	1
C (1) DICENTRA SPECTABILIS	DICENTRA BLEEDING HEART PINK	1
D (1) ECHINACEA PURPUREA 'MAGNUS'	PURPLE CONEFLOWER	1
E (1) IRIS VERSICOLOR	BLUE FLAG IRIS	1
F (1) LIATRIS	LIATRIS	1
G (1) LOBELIA CARDINALIS 'QUEEN VICTORIA'	CARDINAL FLOWER	1
H (1) RUDBECKIA HIRTA	RUDBECKIA, GOLDSTURM	1
SHRUB, DECIDUOUS		
I (3) ARONIA ARBUTIFOLIA 'BRILLIANTISS'	CHOKEBERRY, BRILLIANT RED	3
J (5) CLETHRA ALNIFOLIA 'RUBY SPICE'	SUMMERSWEET, RUBY SPICE	5
K (14) COREOPSIS VERTICILLATA	COREOPSIS MOONBEAM	14
L (5) DIERVILLA LONICERA	BUSH HONEYSUCKLE	5
M (3) FOTHERGILLA GARDENII 'MT. AIRY'	FOTHERGILLA, DWARF, WHITE	3
N (1) HAMAMELIS VIRGINIANA	WITCHHAZEL	1
O (5) HYDRANGEA ARBORESCENS	HYDRANGEA, ANNABELLE	5
P (1) VIBURNUM DENTATUM	VIBURNUM, ARROWWOOD	1
TREE, DECIDUOUS		
Q (1) AMELANCHIER X GRANDIFLORA 'AUTUMN BRILLIANCE'	APPLE SERVICEBERRY	1

Revision #:

Date: 4/8/2022

Scale:

1" = 3'

Landscape Plan: 1

Steve Kazilionis (Bayside)

Landscape Design by: Jason White

Plants Unlimited

Steve Kazilionis

February 23, 2023



Common Name Apple Serviceberry
Botanical Name Amelanchier x grandiflora 'Autumn Brilliance'
Classification Tree, Deciduous
Height 10' (3 m) **Width** 10' (3 m)
Color Blue-green foliage
Flower Color White
Flower Season Early Spring
Sun Full Sun, Light Shade
Soil Average, well-drained
Climate Zones 4,5,6,7,8,9

Hybrid apple serviceberry cultivar is a deciduous, early-flowering large shrub or small tree which typically grows 15-25' tall. Features 5-petaled, showy, slight fragrant, white flowers in drooping clusters which appear before the leaves emerge in early spring. Finely toothed, obovate, bluish green leaves change to brilliant orange-red in autumn. Flowers give way to small, round green berries which turn red and finally mature to a dark purplish black in early summer.



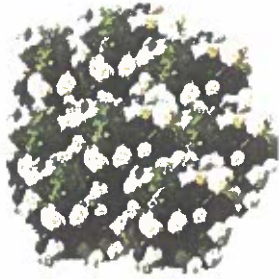
Common Name Chokeberry, Brilliant Red
Botanical Name Aronia arbutifolia 'Brilliantiss'
Classification Shrub, Deciduous
Height 10' (3 m) **Width** 5' (1.5 m)
Color White flowers; red fruit and leaves in fall
Flower Color Red, White
Flower Season Spring, Late Spring, Early Summer, Summer, Late Summer, Early Fall, Late Fall
Sun Full Sun, Full Shade, Light Shade
Soil Moist soil
Climate Zones 4,5,6,7,8,9

Multistemmed flowering shrub, leaves are 2-3 long, smooth, shiny and pale green. Fruits ripen in late summer, persist into winter. Pruning rarely needed. Best in moist conditions, will adapt to drier soils. Useful as hedge, accent, and in shrub border.



Common Name Fothergilla, Dwarf, white
Botanical Name Fothergilla gardenii 'Mt. Airy'
Classification Shrub, Deciduous
Height 6' (1.8 m) **Width** 4' (1.2 m)
Color Creamy-white flowers; foliage turns yellow-orange-red
Flower Color Red, Yellow, White, Orange
Flower Season Early Spring, Spring, Late Spring, Early Summer, Summer, Late Summer, Early Fall, Fall
Sun Full Sun, Full Shade, Light Shade
Soil Acid, peaty, moist loam, well-drained
Climate Zones 5,6,7,8

Upright shrub produces clusters of fragrant blossoms before leaves unfurl in spring. Dark green leaves color consistently well each fall. Grow in groups, shrub borders, with rhododendrons.



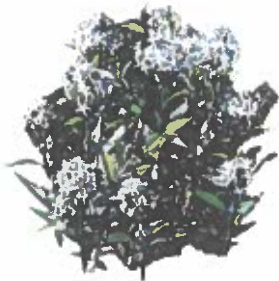
Common Name	Hydrangea, Annabelle		
Botanical Name	Hydrangea arborescens		
Classification	Shrub, Deciduous		
Height	8' (2.5 m)	Width	8' (2.5 m)
Color	White		
Flower Color	White		
Flower Season	Early Summer, Summer, Late Summer, Early Fall, Fall		
Sun	Full Sun, Full Shade, Light Shade		
Soil	Moist, fertile		
Climate Zones	4,5,6,7,8		

It features pure white flowers which are much larger, up to 12 inches across. The strong, straight stems hold the blooms up well. Blooms in late spring to summer, often continuing into fall. This full, lush shrub needs plenty of room to show off its spectacular beauty.



Common Name	Viburnum, Arrowwood		
Botanical Name	Viburnum dentatum		
Classification	Shrub, Deciduous		
Height	15' (4.5 m)	Width	12' (3.7 m)
Color	White		
Flower Color	Blue, White		
Flower Season	Spring, Fall		
Sun	Full Sun, Full Shade, Light Shade		
Soil	Almost any well drained.		
Climate Zones	2,3,4,5,6,7,8		

Arrowwood Viburnum is a rounded multi stemmed shrub with spreading, arching branches. White spring flowers and fall bluish fruit. Excellent for hedges, groupings and filler in shrub border. Medium growth rate.



Common Name	Bluestar		
Botanical Name	Amsonia tabernaemontana		
Classification	Flower, Perennial		
Height	48" (1.2 m)	Width	4' (1.2 m)
Color	Green foliage turns golden-yellow in the fall.		
Flower Color	Blue		
Flower Season	Late Spring, Early Summer		
Sun	Full Sun, Light Shade		
Soil	Moderately fertile, moist yet well-drained		
Climate Zones	5,6,7,8,9		

Willow-like foliage is topped with pale blue star-shaped flowers in the spring. The light green foliage turns a beautiful golden-yellow in the fall. A low maintenance perennial and easily grown.



Common Name	Cardinal Flower		
Botanical Name	<i>Lobelia cardinalis</i> 'Queen Victoria'		
Classification	Flower, Perennial		
Height	48" (1.2 m)	Width	4' (1.2 m)
Color	Bright scarlet		
Flower Color	Red		
Flower Season	Summer		
Sun	Full Sun, Light Shade		
Soil	Well-drained, moist, rich		
Climate Zones	4,5,6,7,8,9		

Vigorous perennial with showy deep red flowers on spikes that rise above crisp saw-toothed burgundy leaves. Often short-lived though selfseeding perpetuates display. Grow in border, natural areas.



Common Name	Dicentra, Bleeding Heart Pink		
Botanical Name	<i>Dicentra spectabilis</i>		
Classification	Flower, Perennial		
Height	36" (90 cm)	Width	30" (75 cm)
Color	Green foliage		
Flower Color	Pink, White		
Flower Season	Early Spring, Spring, Late Spring, Early Summer, Summer, Late Summer		
Sun	Full Shade, Light Shade		
Soil	Fertile, humus-rich, moist but well-drained and well mulched		
Climate Zones	3,4,5,6,7,8,9		

Dainty heart-shaped, pink flowers. Suitable for cutting. Great alone or in mixed shady beds.



Common Name	Rudbeckia, Goldsturm		
Botanical Name	<i>Rudbeckia hirta</i>		
Classification	Flower, Perennial		
Height	24" (60 cm)	Width	2' (60 cm)
Color	Yellow		
Flower Color	Yellow		
Flower Season	Summer		
Sun	Full Sun, Light Shade		
Soil	Moist, well-drained, loam		
Climate Zones	3,4,5,6,7,8,9,10		

Easy to grow. Produces masses of golden daisy-like flowers with brownish centers on hairy stems. A popular favorite for sunny mixed beds and borders.



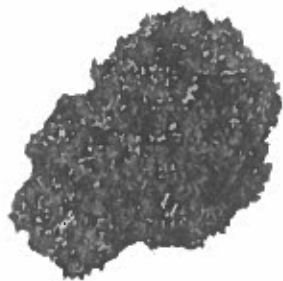
Common Name Purple Coneflower
Botanical Name Echinacea purpurea 'Magnus'
Classification Flower, Perennial
Height 48" (1.2 m) **Width** 1' (30 cm)
Color Green leaves with pink flowers.
Flower Color Pink
Flower Season Summer, Fall
Sun Full Sun
Soil Moist to wet soil, well-drained/loamy, sandy or clay.
Climate Zones 4,5,6,7,8,9
 Flowers are showy, great for cut flowers and as dried flowers.



Common Name Coreopsis Moonbeam
Botanical Name Coreopsis verticillata
Classification Shrub, Deciduous
Height 18" (45 cm) **Width** 18" (46 cm)
Color Green leaves with yellow flowers.
Flower Color Yellow
Flower Season Summer
Sun Full Sun
Soil
Climate Zones 3,4,5,6,7,8,9
 Its has pale yellow flowers in great abundance above delicate, needlelike foliage.



Common Name Liatris
Botanical Name Liatris
Classification Flower, Perennial
Height 24" (60 cm) **Width** 2' (60 cm)
Color Pink, lavender, or white
Flower Color Pink, White, Lavender
Flower Season Summer, Late Summer, Early Fall, Fall
Sun Full Sun, Full Shade, Light Shade
Soil Loamy, well-drained
Climate Zones 4,5,6,7,8,9
 Easy to grow. Produces feathery spike flowers popular in fresh or dried flower arrangements.
 Looks great combined with ornamental grasses.



Common Name	Indigo, Blue False		
Botanical Name	Baptisia australis		
Classification	Flower, Perennial		
Height	36" (90 cm)	Width	2' (90 cm)
Color			
Flower Color	Yellow, Orange		
Flower Season	Summer, Late Summer		
Sun	Full Sun, Light Shade		
Soil	Dry to medium wet soils		
Climate Zones	3,4,5,6,7,8,9		

This Indigo is a showy, tall grass treasured for its lush blue-green foliage and stunning deep blue, flowering spikes. Blooming in the summer, Baptisia has an enormous, deep reaching root system and is long lived, so give it a few growing seasons to reach the mature size.



Common Name	Summersweet, Ruby Spice		
Botanical Name	Clethra alnifolia 'Ruby Spice'		
Classification	Shrub, Deciduous		
Height	5' (1.5 m)	Width	2' (60 cm)
Color	White, also shades of pale pink		
Flower Color	Pink		
Flower Season	Summer		
Sun	Full Sun, Full Shade, Light Shade		
Soil	Moist, acid, moisture retentive		
Climate Zones	3,4,5,6,7,8,9		

Medium size shrub with vertical branches produces 3-5 spires of tiny fragrant flowers in mid- to late summer. Deep green leaves grow 2-4" long, turn clear yellow in fall. Tolerates coastal climate. Use as accent, foundation planting, near ponds or along seashore.

Common Name	Bush Honeysuckle		
Botanical Name	Diervilla lonicera		
Classification	Shrub, Deciduous		
Height	36" (90 cm)	Width	36"
Color	Green - orange, red and yellow in the fall		
Flower Color	Yellow		
Flower Season	Early Summer, Summer		
Sun	Full Shade, Light Shade		
Soil	Adaptable. Average moisture, well-drained.		
Climate Zones	3,4,5,6,7		

Common Name Witchhazel
Botanical Name Hamamelis virginiana
Classification Shrub, Deciduous
Height 15' (4.5 m) **Width** 12'
Color Green with yellow fall foliage
Flower Color Yellow
Flower Season
Sun
Soil Tolerates wet soils, well drained soil that may be clay based
Climate Zones 4,5,6,7,8

Common Name Blue Flag Iris
Botanical Name Iris versicolor
Classification Flower, Perennial
Height 36" (90 cm) **Width** 2'
Color
Flower Color Blue, Purple
Flower Season Spring, Early Summer
Sun Full Sun, Light Shade
Soil Moist to wet
Climate Zones 3,4,5,6,7,8,9
